

**SANDOVAL
CUSD 501**



INTEGRATING INITIATIVES

Jennifer Garrison, Superintendent

Linda Brissenden, SIG Transformation Administrator

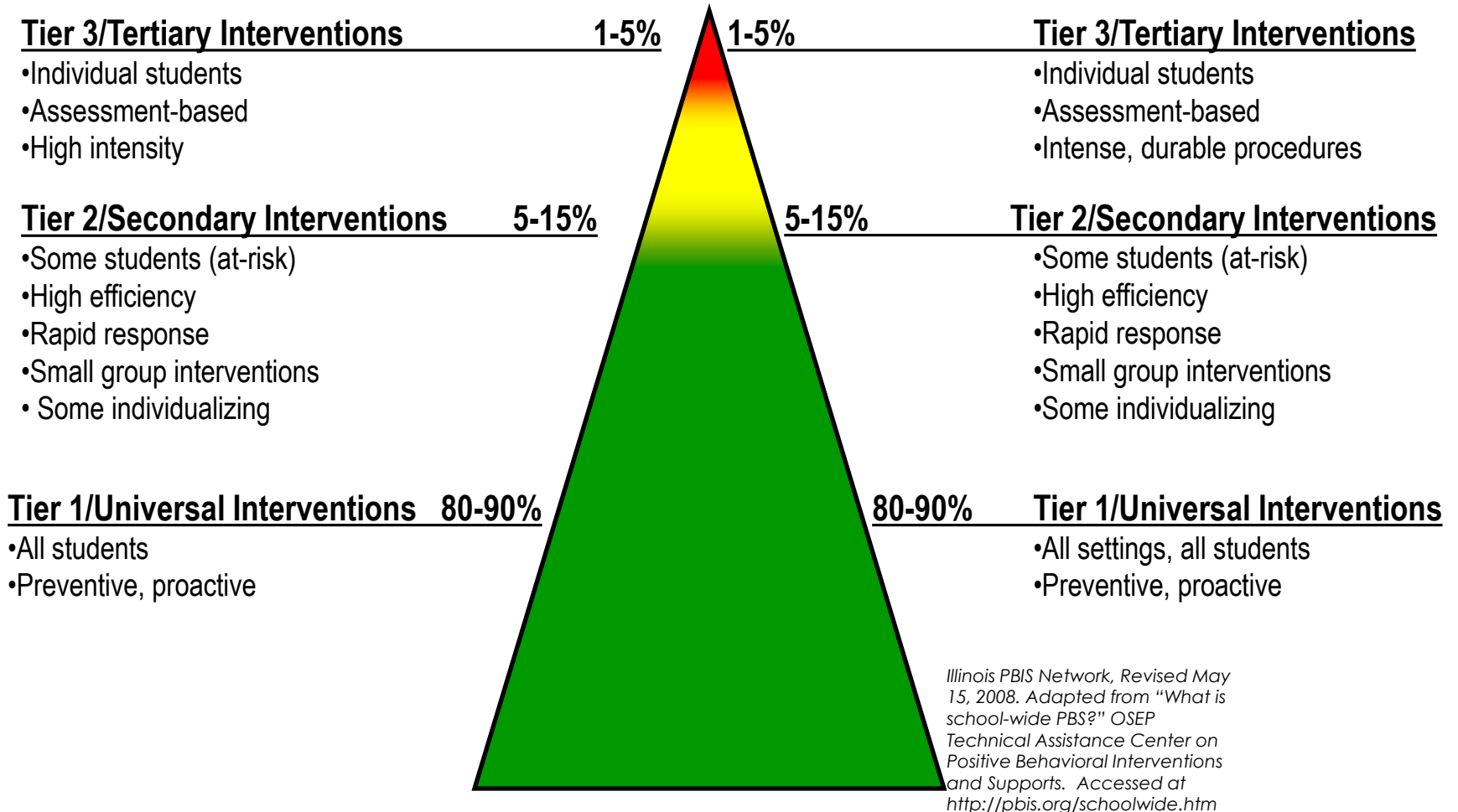
Melissa Hannasch, I-Rtl Network

Katie Pohlman, ISTAC-IL PBIS Network

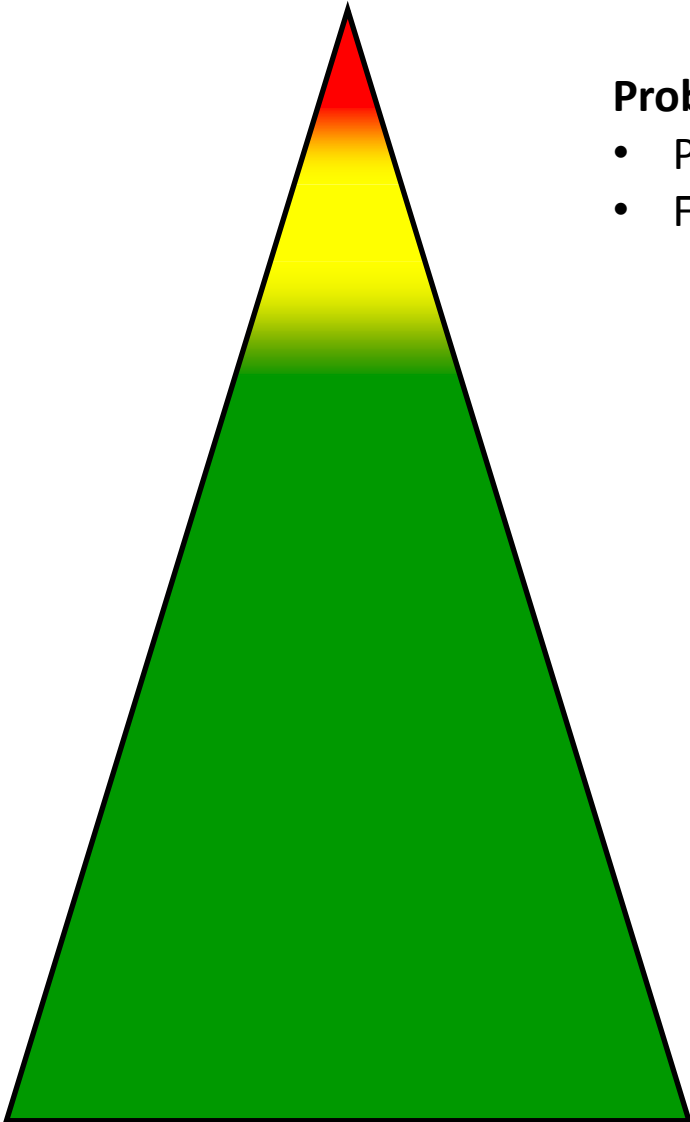
School-Wide Systems for Student Success: A Response to Intervention (RtI) Model

Academic Systems

Behavioral Systems



Necessary Conversations (Teams)



Problem Solving for Individuals:

- Process data: Individual/Aggregated student outcome data
- Fidelity data: Ensure implementation of individualized plan

Problem Solving for Some:

- Process data: # of students receiving a Tier 2 intervention and # of students responding
- Fidelity data: Critical features of interventions

Problem Solving for All:

- Process data: Universal Screening Data (DIBELS, AIMSweb, ODRs, etc)
- Fidelity Data: Team assessment of Universal implementation (SAPSI, BoQ, etc)

How do we get there?



- Establish a District Leadership Team
- Identify all data, initiatives and performance indicators
- Analyze how we are meeting these initiatives and indicators
- Determine methods for integrating initiatives to meet expectations
- Prioritize and develop action steps with timelines
- Evaluate plan implementation

Why?

PBIS

**Common
Core**

PERA

Technology

**Rising
Star**

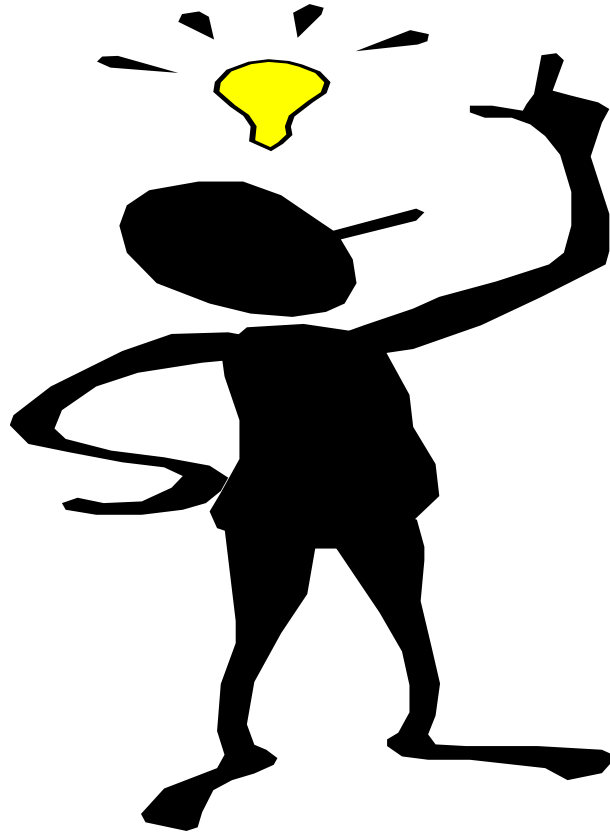
Rtl Academic

And the list goes on and on.....

How can we do it all?



I have an idea!!!!



Focus on Continuous Improvement!!

- It is all about the students- Let's FOCUS on the whole person!!



Let's educate the whole child!

Who are we?

- Sandoval Community Unit School District 501
 - Located in Marion County
 - Small, rural district with high poverty and mobility rate
 - Two buildings
 - Sandoval Elementary- PreK-6 grade
 - Sandoval Junior-Senior High School- 7th-12th grade
 - Awarded a School Improvement Grant to transform the high school

Our Problem

- Limited human capacity to implement education reform in Illinois
- Initiative fatigue
 - Too many meetings and not enough time
 - Each school improvement initiative has workshops, trainings, ways to do things, etc.
- More emphasis on behavior side of triangle than academic

Proposed Solution

- Focus on continuous school improvement and educating the whole child
- Use the Danielson Framework to connect all initiatives for teachers
- Blend or braid academic AND behavior Response to Intervention
- Think of it as ONE TRIANGLE with 3 TIERS of COLLABORATIVE ACADEMIC AND BEHAVIORAL PROBLEM SOLVING FOR ALL, SOME, or EACH

How we got started

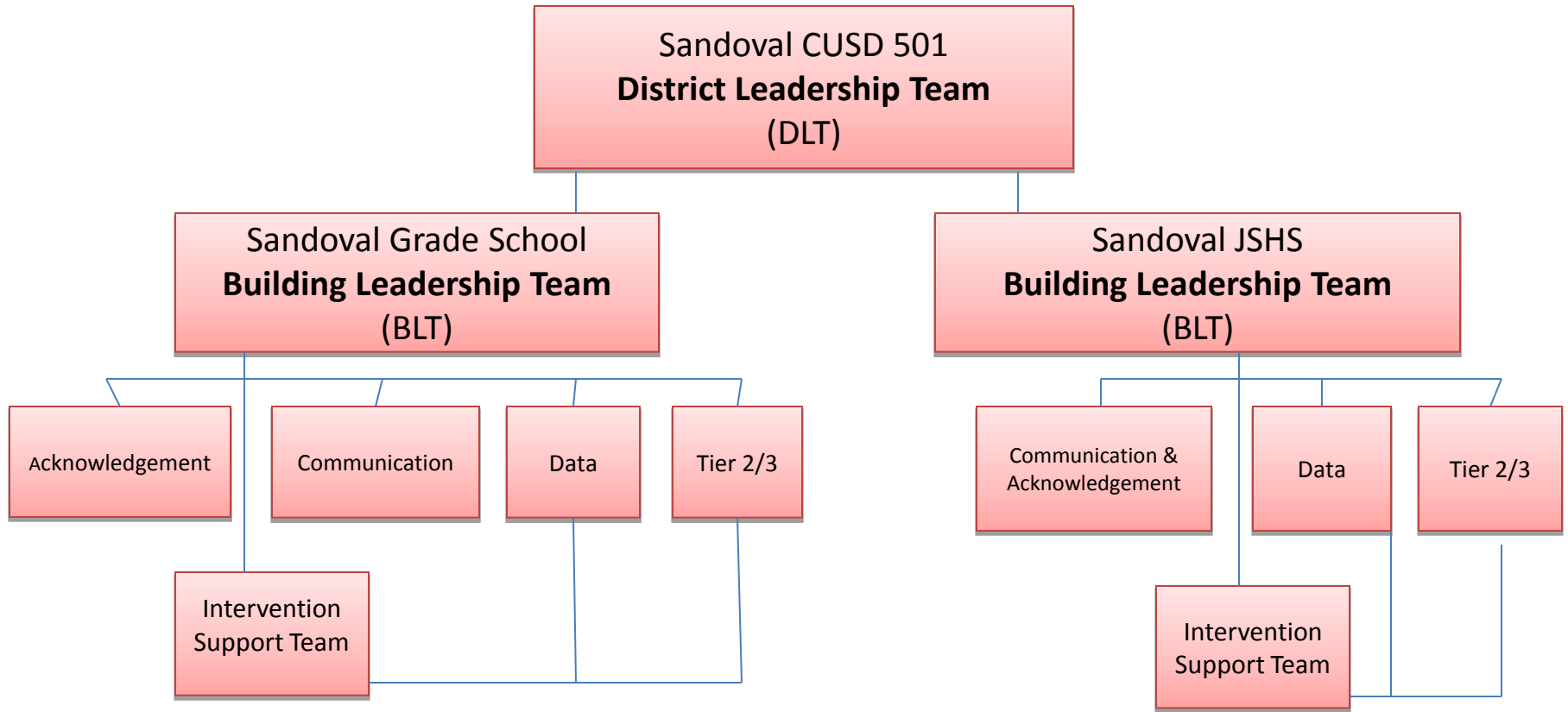
- Formed **District Leadership Team**
 - Superintendent
 - Building Principals
 - Transformation Administrator for SIG
 - Special Education Cooperative School
Psychologist, PBIS & I-Rtl Network External Coach
 - I-Rtl Network Representative
 - IL PBIS Network Representative

Year 1 Goals

- Created the district level **Braided RtI Model**
 - Combined committees for PBIS and Academic RtI
 - Established Building Leadership Teams
- Created a new **RtI Manual** for the district to establish district-wide procedures
 - Developed or included forms
 - Included a Glossary of key terms
 - Created a visual of the whole plan

Sandoval CUSD 501

Response to Intervention Team Model



Process



- DLT met monthly
- Planned for a year at the district level and rolled out at the beginning of the 2013-2014 school year at the building level
- Keep the vision at the forefront!
 - Includes having open conversations about what is needed and what we can manage as a district. Sometimes this challenges peoples' thinking.
- Ongoing process- Rtl Manual is a living document.

Q & A Closing



- Was it easy? **No.**
- Was it fast? **No.**
- Are we 100% sure it will work? **No.**
- Is it 100% better than having individual teams working on two halves of the RtI triangle? **Maybe.**
- Is it the best option for **our** district? **YES.**
- Are our students worth the time it takes? **ABSOLUTELY!**
- What are the most important elements to ensure success? **Data, Systematic Planning, Belief, Caring and Competent Staff, Commitment, Formative Assessment**
- What is the goal? **CONTINUOUS IMPROVEMENT**

Contact Information

- Jennifer Garrison: jgarrison501@gmail.com
- Linda Brissenden: lbrissenden33@gmail.com
- Melissa Hannasch: mhannasch@roe45.net
- Katie Pohlman: katie.pohlman@pbisillinois.org



Believe



Commit



Achieve

Sandoval CUSD 501



Thanks to the I-Rtl Conference Committee for the opportunity to present today.

We hope you all have a great conference!

